



**RAMAGYA SCHOOL, NOIDA**  
I /CYBER/2017-18  
OLYMPIAD PRACTICE WORKSHEET

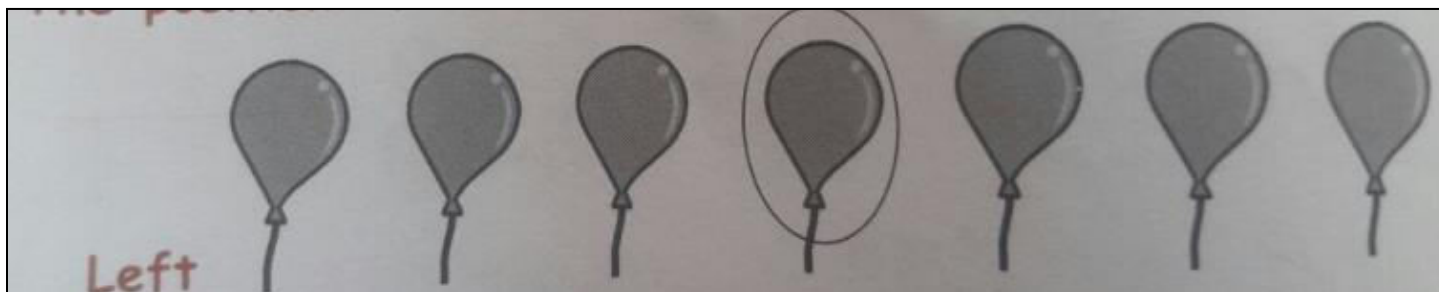
**LOGICAL REASONING**

Q1. Find the missing number in the given number pattern.



- A. 21                      B. 19                      C. 23                      D. 17

Q2. The position of encircle balloon is



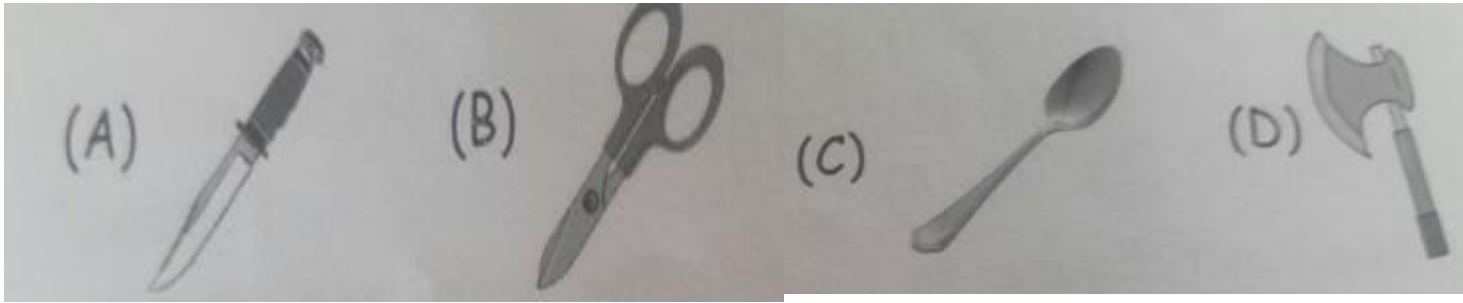
- (A) 2<sup>nd</sup> from the left end  
(B) 3<sup>rd</sup> from the right end  
(C) 3<sup>rd</sup> from the left end  
(D) 4<sup>th</sup> from the left end

Q3. If Trishu’s birthday is on third Friday of August 20XX, then on which date Trishu will celebrate her birthday?

AUGUST 20XX						
Sun	Mon	Tue	Wed	Thu	Fri	Sat
			1	2	3	4
5	6	7	8	9	10	11
12	13	14	15	16	17	18
19	20	21	22	23	24	25
26	27	28	29	30	31	

- A. 3<sup>rd</sup> August                      B. 10<sup>th</sup> August                      C. 17<sup>th</sup> August                      D. 24<sup>th</sup> August

Q4. Select the odd one out.

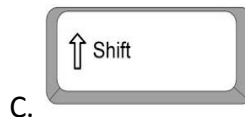


### COMPUTERS AND INFORMATION TECHNOLOGY

Q5. Words and sentences are typed using \_\_\_\_\_ keys.

- A. Number
- B. Special
- C. Alphabet
- D. Control

Q6. \_\_\_\_\_ key is also called as return key.



Q7. Computer in homes CANNOT be used for \_\_\_\_\_

- A. Typing
- B. Watching movies
- C. Playing games
- D. Updating passbooks

Q8. To type capital letters, turn on the \_\_\_\_\_ key on the keyboard.

- A. Delete
- B. Enter
- C. CapsLock
- D. Arrow

Q9. A mouse has a wheel in the center which is called a \_\_\_\_\_ wheel.

- A. Track
- B. Touch
- C. Scroll
- D. Roll

10. Which of the following mouse action displays a list of commands on screen ?

- A. Right - click
- B. Drag and drop
- C. Scrolling
- D. Left - click

Q11. The first step to start a computer is to \_\_\_\_\_

- A. Switch on the main power button
- B. Press the power button on UPS
- C. Press the power button on CPU
- D. Switch on the monitor

Q12. With the help of which part of a computer, the shut down option is selected in start menu?



Q13. How you can keep your computer dust free?

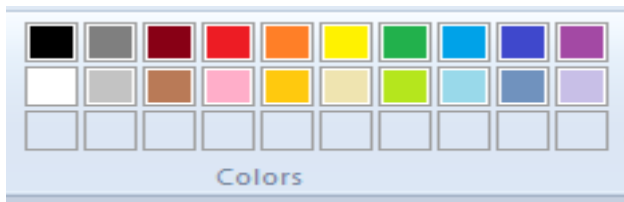
- A. By washing it with water
- B. By blowing air on it
- C. By cleaning it with a dry cloth
- D. Both (A) and (B)

Q15. Which of the following tools is NOT used while drawing the given picture?



- A. Oval tool
- B. Rectangle tool
- C. Pencil tool
- D. Line tool

Q16. The given option is used to \_\_\_\_\_



- A. Choose the color for your drawing
- B. Choose the shape for your drawing
- C. Choose the different tools for your drawing
- D. None of these.

### ACHIEVERS SECTION

Q17. Which of the following statements is CORRECT about the given device ?



- A. It is a type of computer.
- B. It can be carried from one place to another
- C. It is called laptop
- D. All of these.

