



**RAMAGYA SCHOOL, NOIDA**  
III /CYBER/2017-18  
OLYMPIAD PRACTICE WORKSHEET

**LOGICAL REASONING**

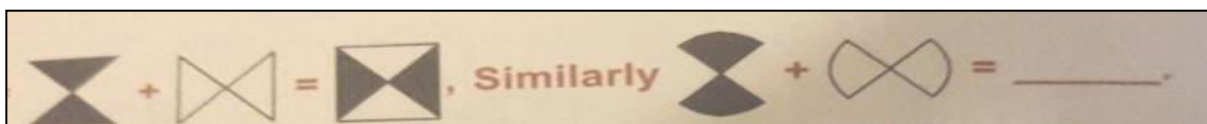
Q1. Moon : Satellite :: Earth : ?

- (A) Sun                      (B) Planet                      (C) Solar system                      (D) Asteroid

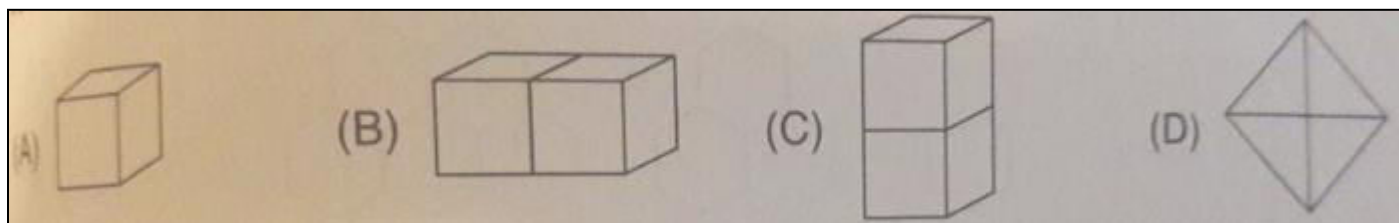
Q2. If ' REASON' is coded as 5 and ' BELIEVED' as 7, what is the code number for 'GOVERNMENT'?

- (A) 6                      (B) 8                      (C) 9                      (D) 10

Q3. If



Q4. I have 6 faces, 8 vertices and 12 edges. Which of the following shapes will NOT look like me ?



**COMPUTERS AND INFORMATION TECHNOLOGY**

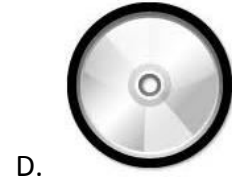
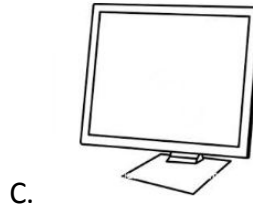
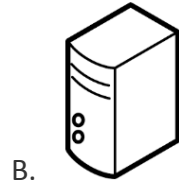
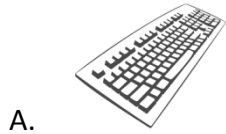
Q5. A computer is a powerful machine. Which of the following is NOT a feature of computer?

- A. High speed
- B. High reliability
- C. Huge storage
- D. High cost

Q6. The control unit of the computer controls the \_\_\_\_\_

- A. Working of the computer keyboard
- B. Flow of electricity within the computer
- C. Flow of data in the computer
- D. Performance of all arithmetic and logical operations.

Q7. Pick the odd one out ( regarding IPO cycle)



Q8. How many keys are there on a standard keyboard ?

A. 97

B. 82

C. 104

D. 136

Q9. What are the three items usually found on a mouse ?

- A. Arrow, left button, and right button
- B. Scroll wheel, left button and right button
- C. I – beam, scroll wheel and left button
- D. Cursor, left button and right button

Q10. Why is working with text sometimes difficult in MS-Paint ?

- A. You can't read your text.
- B. Once you add text and click off it, you can't edit it or change the font or size.
- C. You can't change the size of the text.
- D. You can't change the font.

Q11. Which operation in MS-Paint would change the Image X to Image Y?

Image X



Image Y



- A. Flip vertical
- C. Rotate 180°

- B. Skew
- D. Flip horizontal

Q12. Pressing this key allows you to jump the cursor several spaces forward at once.

- A. Tab key
- B. Space bar
- C. Delete
- D. Backspace

Q13. Input and Output devices are connected to the computer through the \_\_\_\_\_

- A. Monitor
- B. Keyboard
- C. Port
- D. RAM

Q14. \_\_\_\_\_, \_\_\_\_\_ and \_\_\_\_\_ keys appear twice on a standard keyboard ?

- A. Ctrl, Alt, Shift
- B. Ctrl, Alt, Tab
- C. Ctrl, Alt, Capslock
- D. Ctrl, Alt, Backspace

Q15. USB stands for \_\_\_\_\_

- A. Unique Supply Bus
- B. Universal Serial Bus
- C. Un-interrupted Supply Board
- D. Unique Serial Board

Q16. Devices which are used to provide data to the computer are called \_\_\_\_\_ devices.

- A. Input
- B. Output
- C. Computing
- D. Processing

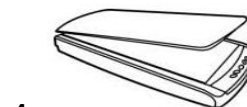
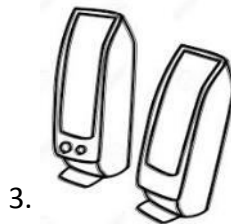
### ACHIEVERS SECTION

Q17. The list of computing technologies that had been arrived before the development of first generation computers is given below. Arrange them in the increasing order of their arrivals.

- 1. Abacus
- 2. Pascaline
- 3. Napier's Bones
- 4. Stepped Reckoner
- 5. Babbage's Analytical engine

- A. 1, 2, 3, 4, 5
- B. 1, 3, 2, 4, 5
- C. 2, 3, 1, 4, 5
- D. 4, 5, 3, 2, 1

Q18. Which of the following devices will NOT be needed, if you want to preview and print the hard copy of the document?



- A. Only 1
- B. Only 2
- C. Only 3 and 4
- D. 1, 3 and 4

Q19. The output displayed on a \_\_\_\_\_ is known as a soft copy.

- A. Speaker
- B. Monitor
- C. Printer
- D. Scanner

Q20. Where does a computer save its data?

- A. Memory
- B. Headphones
- C. Mouse
- D. A computer does not save its data.