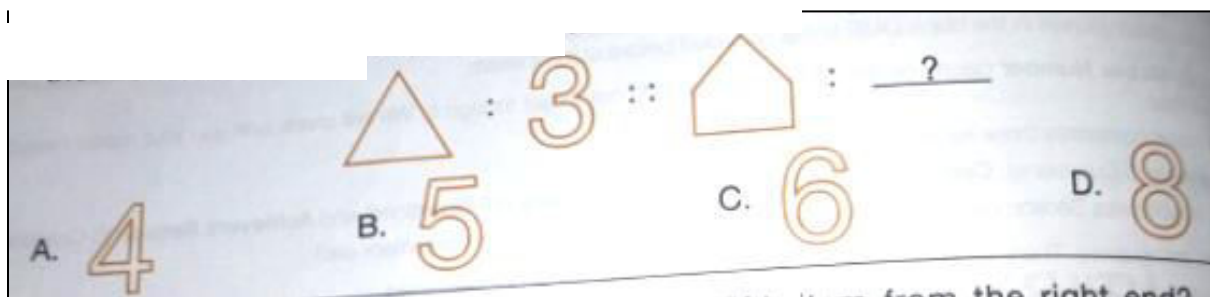




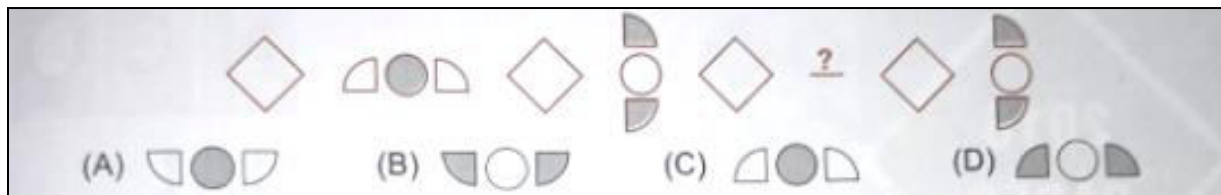
**RAMAGYA SCHOOL, NOIDA**  
II /CYBER/2017-18  
OLYMPIAD PRACTICE WORKSHEET

**LOGICAL REASONING**

Q1. There is a certain relationship between the pair of figures on either side of : :: Identify the relation between the left pair and find the missing figure.



Q2. Find the missing figure to complete the given series.

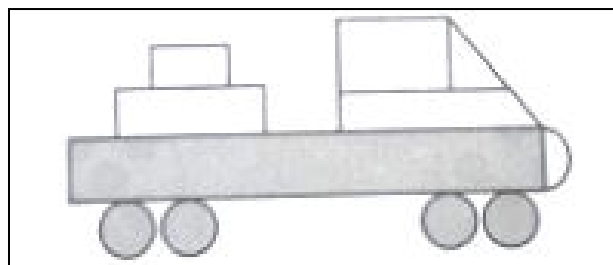


Q3. 6 groups of \_\_\_\_\_ chocolates can be formed from the given chocolates.

- A. 6
- B. 4
- C. 3
- D. 5



Q4. Which of the following shapes is missing in the given figure ?



- A. Square
- B. Triangle
- C. Rectangle
- D. Circle

## COMPUTER SCIENCE

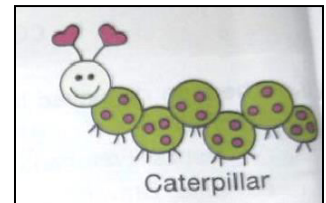
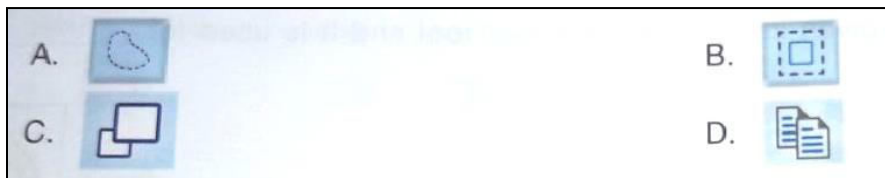
Q1. Which of the following tools is NOT used to draw the given image in MS – Paint of Windows 7 ?



Q2. The small pictures on the desktop are called icons in Windows 7. An icon can represent \_\_\_\_\_.

- A. File                      B. Folder                      C. Program shortcuts                      D. All of these.

Q3. Which of the following tools will you choose to select the mouth of the caterpillar in MS-Paint ?



Q4. Select the INCORRECT match.

- A. Mouse Pointer - Horizontal blinking line
- B. Desktop - First screen that gets displayed on computer
- C. Taskbar - Horizontal bar that displays Start button and system tray
- D. Title bar - Displays file name and program name

Q5. Which of the following is NOT a system icon in Windows 7 ?



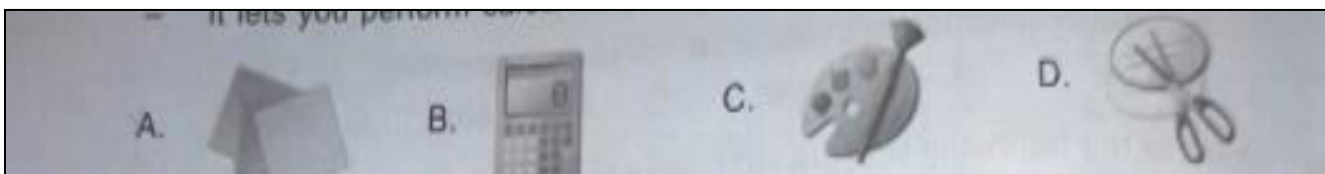
Q6. Which of the following tasks CANNOT be done with the program whose icon is shown here ?



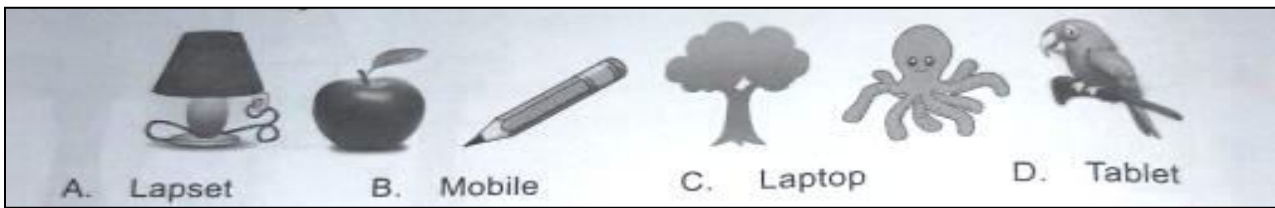
- A. Entering your name                      B. Entering phone numbers                      C. Playing sound                      D. All of these.

Q7. Identify the following.

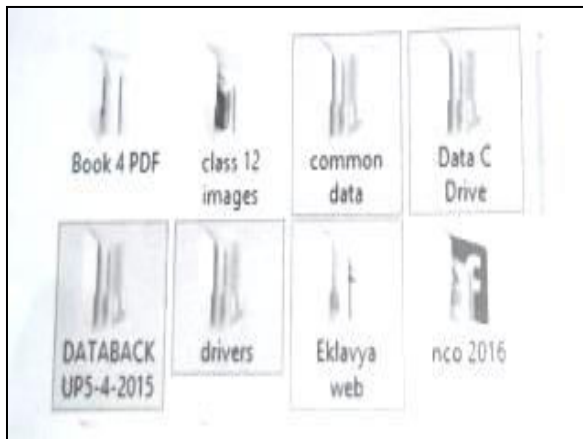
- It is one of the accessories available in Windows 7.
- It lets you perform calculations like addition, subtraction, multiplication etc.



Q8. Identify the pictures given below. Which of the following words would be formed when you write first letter of each picture in sequence ?



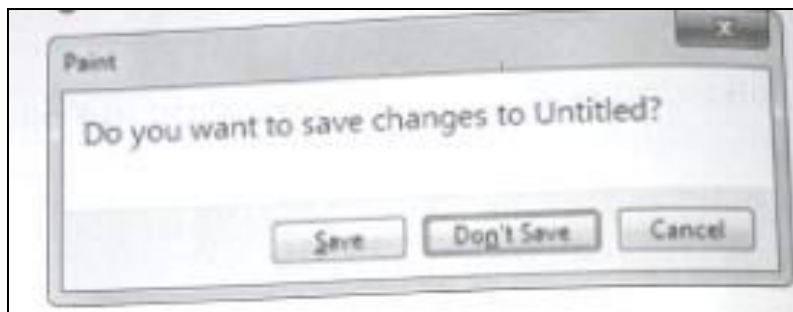
Q9. Which of the following options would replace the (?) in the given order of steps to select folders shown in the given snapshot?



1. Click on the folder named – “ common data”
2. Hold the ( ? ) key
3. Click on the folder named – “ Eklavya web”



Q 10. Observe the snapshot given here carefully. Which of the following keys would you press to highlight the Cancel button in the given dialog box ?



Q11. Computers in banks can be used to maintain \_\_\_\_\_

- A. Records of customers      B. Processing transactions      C. Cash records      D. All of these.

Q12. There are several devices which are connected to the computer. These devices are connected to the computer using \_\_\_\_\_

- A. Nuts and bolts      B. Different types of data cables  
C. Electric wheels      D. None of these.

Q13. The first calculating device used by man was \_\_\_\_\_ ?

- A. Computer  
B. Calculator  
C. Abacus  
D. All of these.

Q14. In a computer, files are stored in \_\_\_\_\_, which are also known as \_\_\_\_\_

- A. Folders, Directories      B. Directories, Files      C. Files, Folders      D. Files, Drives

Q15. The mouse which has a rubber or a metal ball under its belly is \_\_\_\_\_.

- A. Mechanical mouse  
B. Optical mouse  
C. 3D mouse  
D. Tactile mouse

Q16. What should you do when the mouse pointer goes off the screen ?

- A. Click the mouse      B. Press the space bar      C. Wiggle the mouse      D. Tap the mouse gently